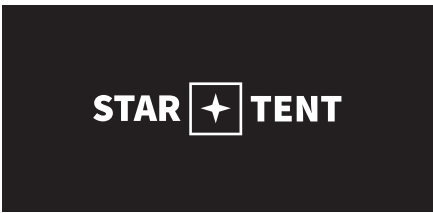


STARTENT FOLDABLE

BUILT ON A SOLID FOUNDATION



01 Improved glide. Rounded corner pieces made of ADC12 aluminum.



02 Octagonal high-quality aluminum profile: Wall thickness 2.7 mm.



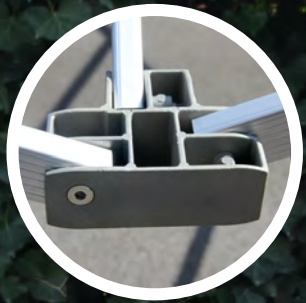
03 Equipped with sturdy pull pins.



04 Robust aluminum foot plates.



05 Velcro strips at corners for optimal roof tension.



06 Aluminum connectors with recessed screws, easy to disassemble and compact frame without clamping.



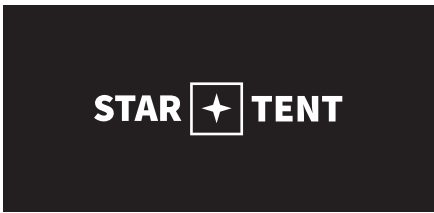
07 Strong spring for proper roof tension.



08 Spacer prevents fabric from getting caught between the profiles.

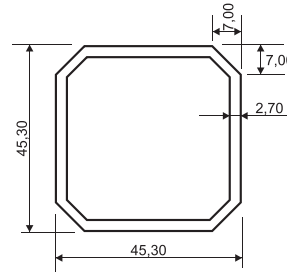
STARTENT FOLDABLE

WHERE STRENGTH AND ELEGANCE MEET

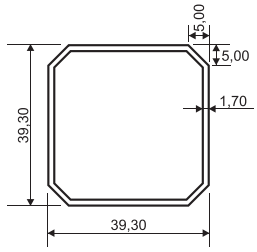


Octagonal Frame

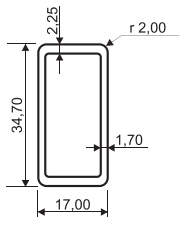
CORNER LEG
OUTER TUBE



CORNER LEG
INNER TUBE



SCISSOR PROFILE



Technical Specifications

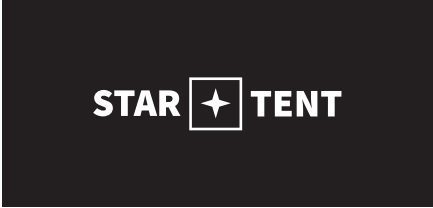
PROFILE SHAPE	OCTAGONAL
PROFILE DIMENSIONS	45 X 45 MM / WALL THICKNESS 2.7 MM
WEIGHT	33,7 KG (3 X 3 M) - 39 KG (4 X 4 M)
SIZES	3 X 3 M - 4 X 4 M
FRAME MATERIAL	HIGH-QUALITY ANODIZED ALUMINUM
CONNECTORS	CAST, ROUNDED ALUMINUM
TENSION SYSTEM	CENTRAL SPRING
STABILITY	LEGS WITH PULL PINS, ROBUST FOOT PLATES
FINISHING	RECESSED SCREWS - NO FABRIC WEAR

- ### For whom?
- EVENTS & PROMOTION
 - HOSPITALITY & CATERING
 - SPORTS CLUBS
 - BRAND ACTIVATION
 - CITIES & MUNICIPALITIES




STARTENT FOLDABLE

YOUR PERSONALIZED FOLDING TENT



Specialized in printed tents




- ▶ FULL-COLOR SUBLIMATION PRINT
- ▶ SCREEN PRINTING FOR LARGE SINGLE-COLOR RUNS

Made in Europe



- ▶ EUROPEAN-MADE FABRICS COMBINED WITH A SOLID FRAME
 - ▶ STRICT QUALITY CONTROL
 - ▶ ECO-FRIENDLY INKS


Configure in our webshop



- ▶ CHOOSE FROM A WIDE RANGE OF STANDARD COLORS
- ▶ PERSONALIZE WITH YOUR LOGO OR DESIGN VIA SUBLIMATION OR SCREEN PRINTING
- ▶ SELECT CONVENIENT ACCESSORIES
 - ▶ CHOOSE SIZE AND FINISHING
 - ▶ EASILY REQUEST A CUSTOMIZED QUOTE
- ▶ FAST, SIMPLE, AND FULLY TAILORED TO YOUR BRAND


shop.visix.be

Custom tailoring



- ▶ COMBINE COLORS FOR ROOF, SEAMS & SIDE WALLS
- ▶ TENT COLORS TAILORED TO YOUR BRANDING

Fast delivery times



- ▶ FLEXIBLE PLANNING
- ▶ QUICK PRINTING AND FINISHING
- ▶ YOUR FOLDING TENT READY IN RECORD TIME



Available Colors

600 DENIER*	WHITE
	BLACK

GRAPHITE GRAY	LIGHT BLUE
LIGHT GRAY	DARK GREEN
DARK BLUE	LIGHT GREEN

LIGHT RED	YELLOW
ORANGE	ECRU

500 DENIER**	WHITE
	BLACK

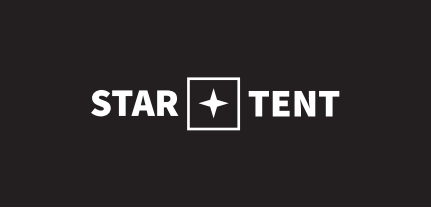
GRAY	ROYAL BLUE
NAVY BLUE	GREEN

RED	YELLOW
ORANGE	BEIGE

* DURABLE 600 DENIER FABRIC - 100% POLYESTER (260 G/M²) WITH PU COATING - WATERPROOF AND FLAME-RETARDANT
** DURABLE 500 DENIER FABRIC - 100% POLYESTER (240 G/M²) WITH PU COATING - WATERPROOF AND FLAME-RETARDANT

STARTENT FOLDABLE

QUICK AND EASY TO SET UP



1 Attach canvas to frame

1A Wrap canvas top compartment around frame top

1B Pull cord to tighten compartment around frame top

1C Attach canvas corners to frame corners (velcro)

2 Lift frame and pull appart
*Cover shown transparent to accentuate frame

3 Push undersides up until *click* sound
*Cover shown transparent to accentuate frame

4 Extend legs on one side

5 Extend legs on other side

FOLDABLE TENT MANUAL

Recommended: 2 people for setup process